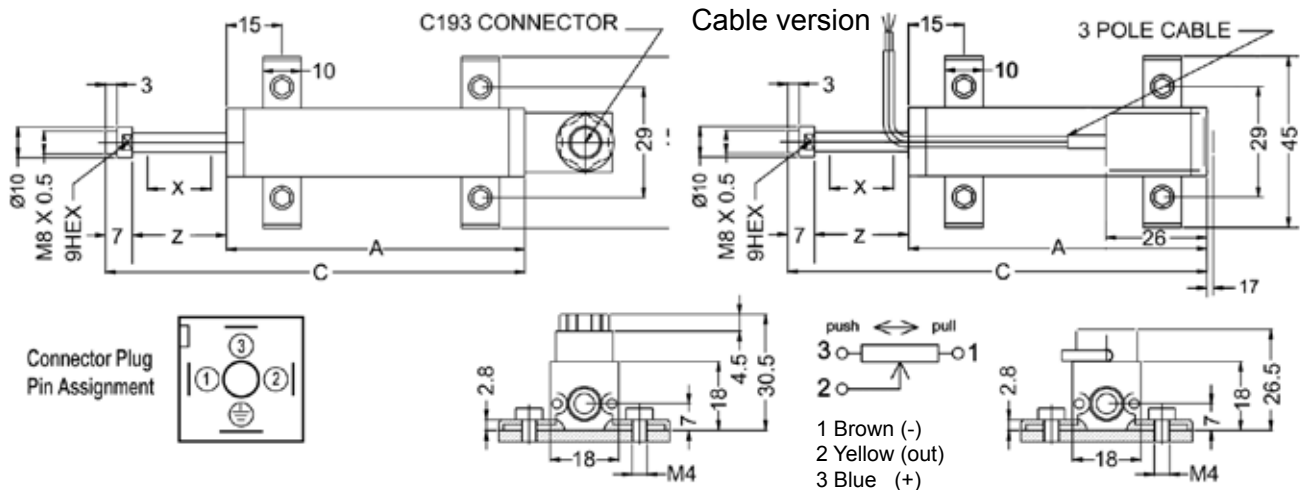
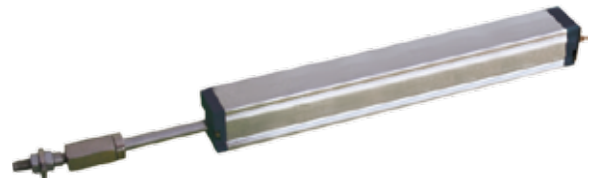


Potentiometric Linear Motion Sensor,
Full Stroke Ranges 50 - 450mm

- Compact Design for Limited Space
- Standard Coupling Connector
- Linearity Tolerances up to $\pm 0,1\%$
- Excellent Repeatability $\pm 50\mu\text{m}$



DIMENSIONS / RESISTANCES

Model	10	25	50	75	100	125	150	175	200	225	250	275	300	350	375	400	425	450
Housing -A- (mm)	60	75	100	125	150	175	200	225	250	275	300	325	350	400	425	450	475	500
Length -C- (mm)	83	113	163	213	263	313	363	413	463	513	563	613	663	763	813	863	913	963
Electr. Travel -X- (mm)	11	26	51	76	101	126	151	177	202	227	252	277	302	353	378	403	428	453
Mech. Travel -Z- (mm)	15	30	55	80	105	130	155	180	205	230	255	280	305	355	380	405	430	455
Resist. $\pm 20\%$ (k Ω)	1	1	5	5	5*	5	5*	5	5*	5	5*	5	5	5*	5	5*	5	5*

*stock item

ELECTRICAL CHARACTERISTICS

Resistance element	Conduktive Plastic
Standard resistance values	1k/5kOhms $\pm 20\%$
Independent linearity tolerance	(typ. IEC60393) $\pm 0,1\%$
Resolution	quasi infinite
Repeatability	(typ. IEC60393) $\pm 50\mu\text{m}$
Input voltage	60VDC (max.)
Recommended wiper current	<1mA
Sealing	IP45
Power dissipation	3W - 10W
Dielectric strength	500 VAC

MECHANICAL CHARACTERISTICS

Vibration (IEC 68-2-6:1982)	10G
Shock (IEC 68-2-29:1968)	40G
Operating force	>5N
Operating speed	5m/s (max.)
Life (movements)	(typ. IEC60393) 20 x 10 ⁶
Operating temperature (°C)	-30°C to +85°C
Mechanical connection	Link ball

MATERIAL

Housing	Anodized Aluminium
Link ball	Stainless steel

OPTIONS

Connector version (ST) or cable version (K)

MTIB (see datasheet „B-electronic“) with integrated or separate (box) electronics for analog signal generating, supply Voltage: 24VDC $\pm 50\%$, output: 0-5VDC, 0-10VDC, 4-20mA factory adjustable

MTIM (see datasheet „M-electronic“) with integrated or separate (box) electronics for analog and digital signal generating and programming of functions Voltage supply: 6VDC-36VDC, Analog output: (processed) 0-5VDC, 0-10VDC, 4-20mA (2 channels), digital output: RS232, 5VTTL

ORDERING INFORMATIONS

Detailed information for all electronics: www.megauto.de/linosense

MT18	100	5k	K	RS232
Typ	Model	Ω	electr. connector	additional

Please note: The specification and information in this datasheet cannot consider all special demands that are caused by the application. Because of this, they are no general description of the properties of the product. Megauto does not assume any responsibility for damages due to improper application of our products. The user has to ensure by its own, that the products used are suitable for his application. Megauto does not warrant the reproducibility or published applications.